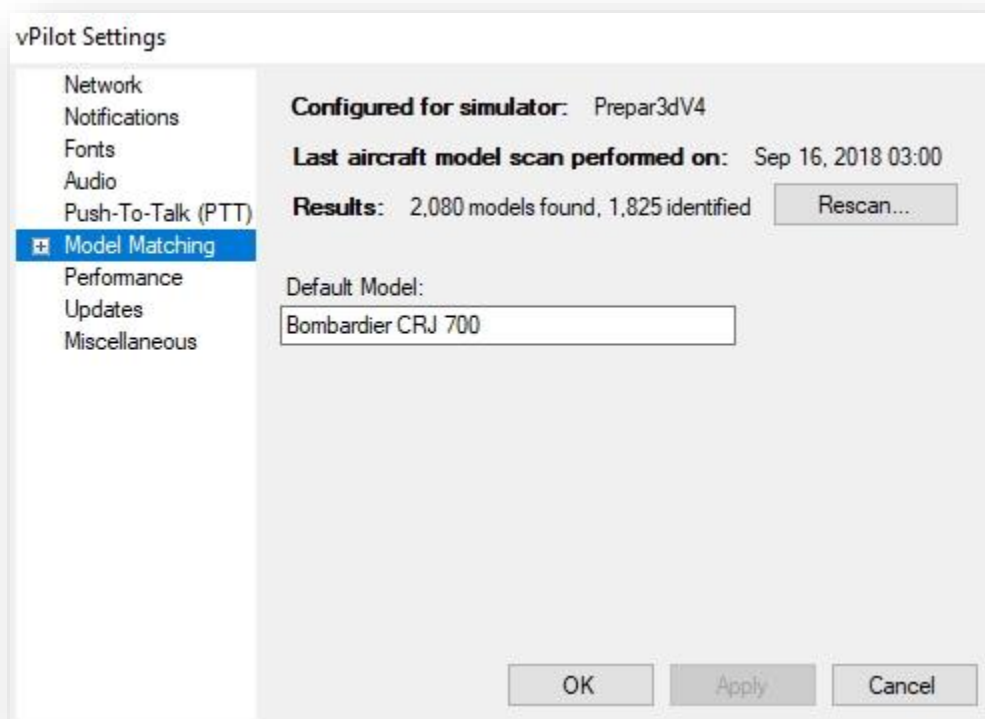


The FLAi automated installation process has been designed to be as simple as possible, and instructions are provided within the Operations Center to complete the installation. However, for users who are not seeing desired results after installation, this document has been created to provide more information about the manual steps required to install FLAi.

First, run the FLAi Operations Center and follow the prompts.

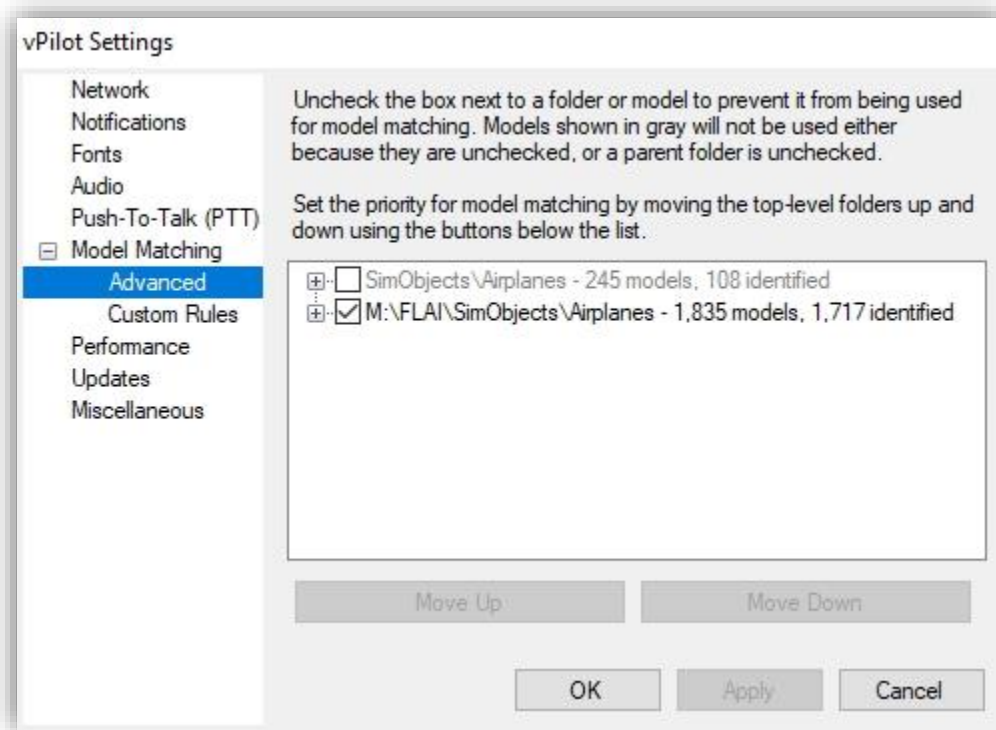
Once the process has completed:

1. **Prepar3D v4 Users Only:** before opening vPilot, open Prepar3D. You will be prompted to enable the FLAi Add-On. This step is required for vPilot to recognize the FLAi models.
2. Load up vPilot, go to settings, and press the “Model Matching” tab. Make sure there are over 1,000 models found:



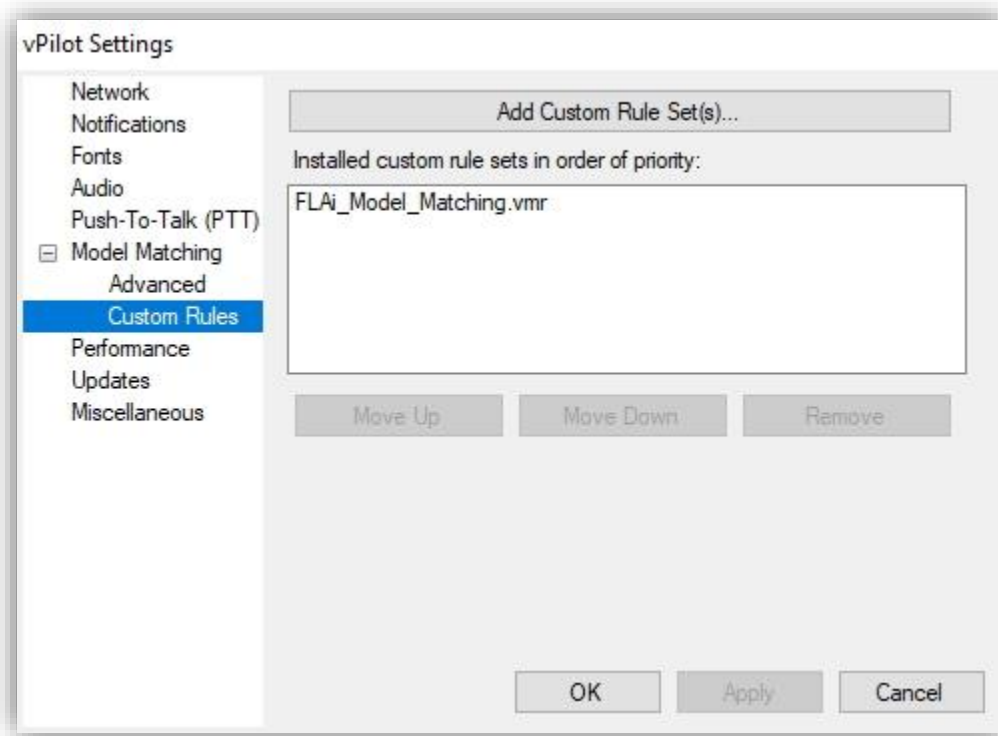
If there are less than 400 models found, ensure you have the beta version of vPilot installed. Version 2.1.17 or later of vPilot is required for models to be identified properly. You can select the Beta version under the “Updates” tab in vPilot Settings.

3. Click the “+” icon beside “Model Matching”, then click on the “Advanced” tab:



Ensure your FLAI directory is checked. If there are other AI packages you have installed, these will also be displayed here. If you do experience issues with conflicting AI packages, you can choose to enable or disable them on this screen.

4. Click the “Custom Rules” tab, and ensure the FLAi model matching .vmr file is shown:



5. If you don't see the file, click the “Add Custom Rule Set(s)...” button and navigate to Documents\vPilot Files. You will notice a FLAi folder within this folder, and a .vmr file located within that. Select and add this .vmr file to your vPilot so it appears within the “Custom Rules” tab as shown above.